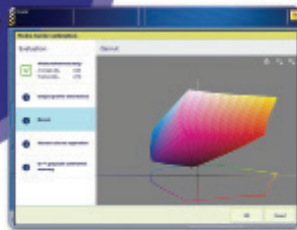
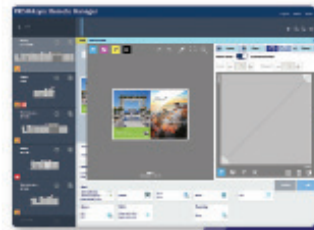


# Canon



Canon imagePRESS C710/810/910 Canon  
70-90 PPM ~ 5-100K/Month



Canon imagePRESS C8000/10000  
80-100 PPM ~ 100K-1 Mil/Month

## Canon ImagePRESS C10000



### Capabilities

The imagePRESS C10000VP Series can provide the edge you need to exceed your customers' expectations. It provides offset-like quality with 2400 x 2400 dpi output quality, tight registration, and stable color on long runs at 100 letter impressions per minute. With dual fixing technology, it can maintain high throughput, even with mixed media and on long runs. The press is designed for demanding production environments with monthly duty cycles of up to 1.5 million prints. No matter the size or focus of your business, remaining competitive and providing more capabilities are essential for continued success. When selecting a technology partner, Canon's extensive print experience can help you tailor its solutions to help increase productivity and provide production excellence for your business.

**Ray Morgan Co.**  
a **ubeO** company

**www.raymorgan.com**

**800-640-6065**